

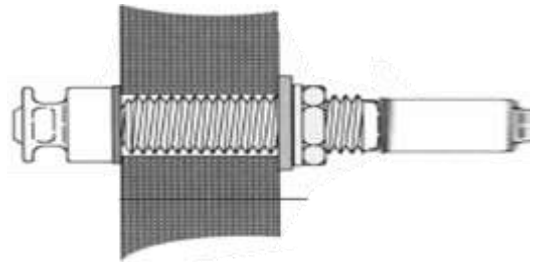


- ENJ Preamp Endpin Jack
- ENJ - G Preamp Jack with on board Gain control
- ENJ - C Preamp Jack with Volume, Tone and on board Gain control
- ENJ - CP Preamp Jack with Volume, Tone and on board Gain control & Piezo bar



INSTALLATION

1. Endpin jack preamp installation.
Make a hole in guitar for endpin jack. Use 12.5 mm or 1/2 inch drill bit for wood.
Install the endpin jack from inside of guitar body
Endpin jack preamp comes with power switch function and will turn on when plug in.



2. Battery bag installation
Install battery bag with included velcro tape.
Place 9V alkaline battery into battery bag. (1500hours)
3. Volume and tone controls installation
Make clean the surface of guitar inside with sand paper.
Mount the self adhesive PCB, (volume, tone) board in location.
4. Optional piezo pickup installation
Make clean and flat for bottom of bridge cavity.
Reduce height of bridge bar as pickup's height.
Make a hole for piezo pickup cable (use 3mm or 1/8").